



Ai + Architecture LLC

PUBLIC

Ai + Architecture LLC., 90 Belknap Street, Concord, MA 01742, USA www.ai-architecture.com +1 978 369 2730 (t) +1 978 369 2731 (f)
Ai建筑事务所，美国马萨诸塞州康科德市贝尔耐普街90号 邮编01742

2004 Olympic Sailing Center & Marina Village

Agios Kosmas, Athens, Greece

Master planning, program development and site design services were provided for the sailing venue for the 2004 Olympic Games in Athens. The 33.6 hectare waterfront site contains competition support areas, a medical center, helipad, athlete training and lounge facilities for 400 international athletes, administration and support areas for officials and VIPs, and recreation and retail amenities for 1,600 spectators.

Client:

Athens 2004 Olympic Committee, Ministry for the Environment, Physical Planning and Public Works

Collaboration:

Sports Consultants Inc. (MEAS Ltd. and CSKR Architects), Marnet S.A., LDK Consultants, Inc., Sasaki Associates

2004雅典奥运会帆船航海村 希腊雅典

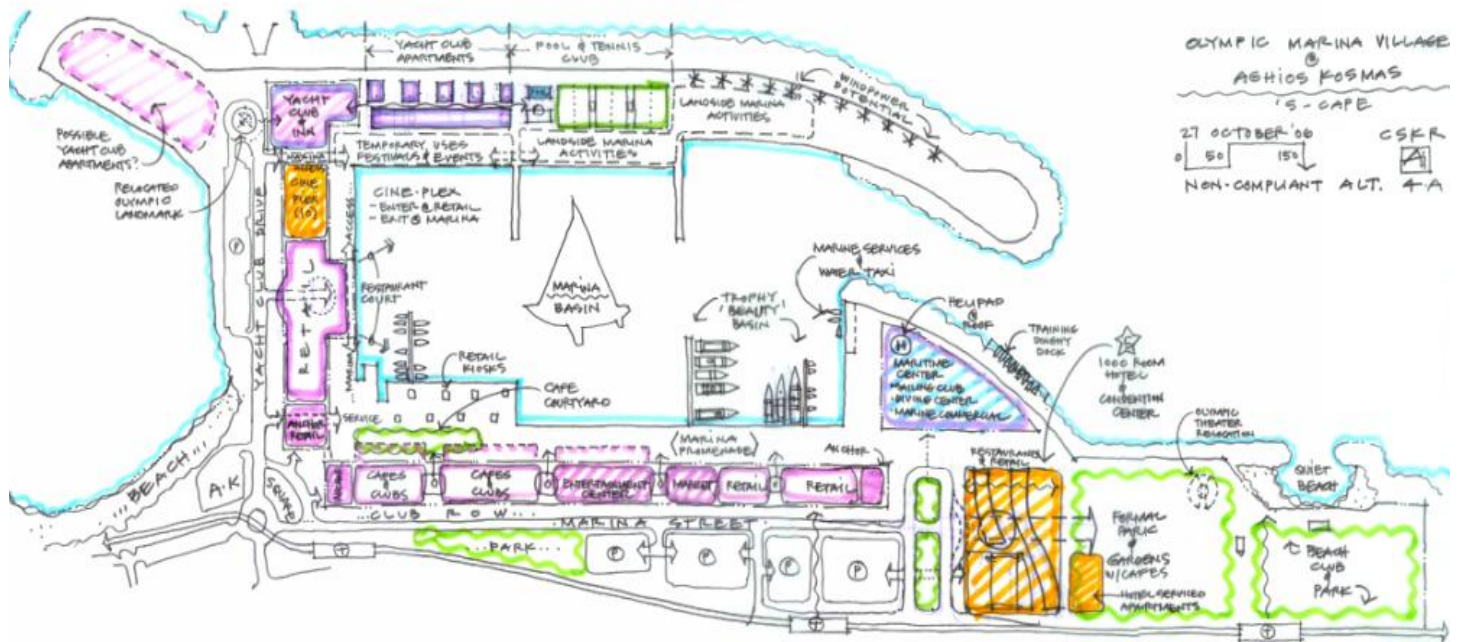
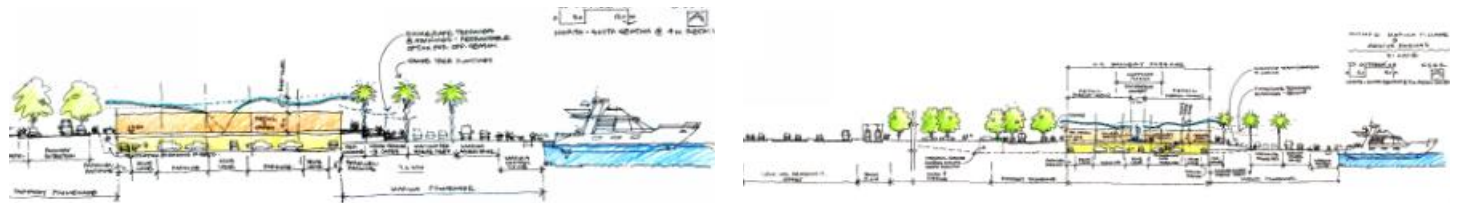
项目范围33.6公顷，包括比赛区、医疗区、停机坪、训练中心、酒廊、休闲购物等设施以服务运动员、组委会官员、VIP客人和1600人容量的观众。

业主:

雅典奥运会组委会，希腊环境建设规划和公共事务部

合作方:

体育咨询 (MEA和SKKR建筑事务所), Marnet S.A., LDK咨询, Sasaki事务所



PUBLIC



2004 Olympic Sailing Center & Marina Village

Agios Kosmas, Athens, Greece

The master plan and project design of the Olympic competition venue anticipated its private sector redevelopment as a marina & public waterfront park, mixed-use retail and leisure center for the enjoyment of the citizens of Athens. Continuing planning and architectural design services were provided to realize the re-use potential of a project that included a 1000-slip marina, a 50,000 shopping and leisure entertainment center, and a 5-star boutique hotel, yacht club and an international marine competition center that commemorates the importance of this facility as an Olympic venue.

Client:

Athens 2004 Olympic Committee, Ministry for the Environment, Physical Planning and Public Works

Collaboration:

Sports Consultants Inc. (MEAS Ltd. and SCKR Architects), Marnet S.A., LDK Consultants, Inc., Sasaki Associates

2004雅典奥运会帆船航海村 希腊雅典

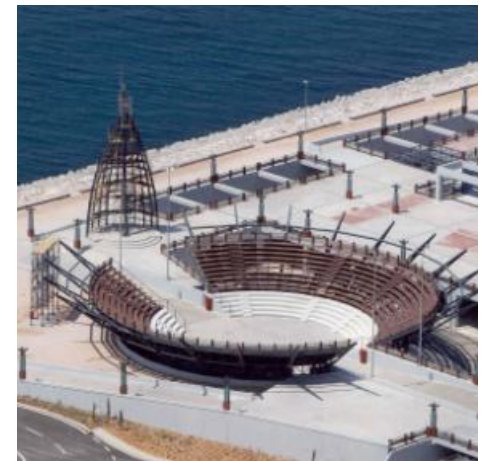
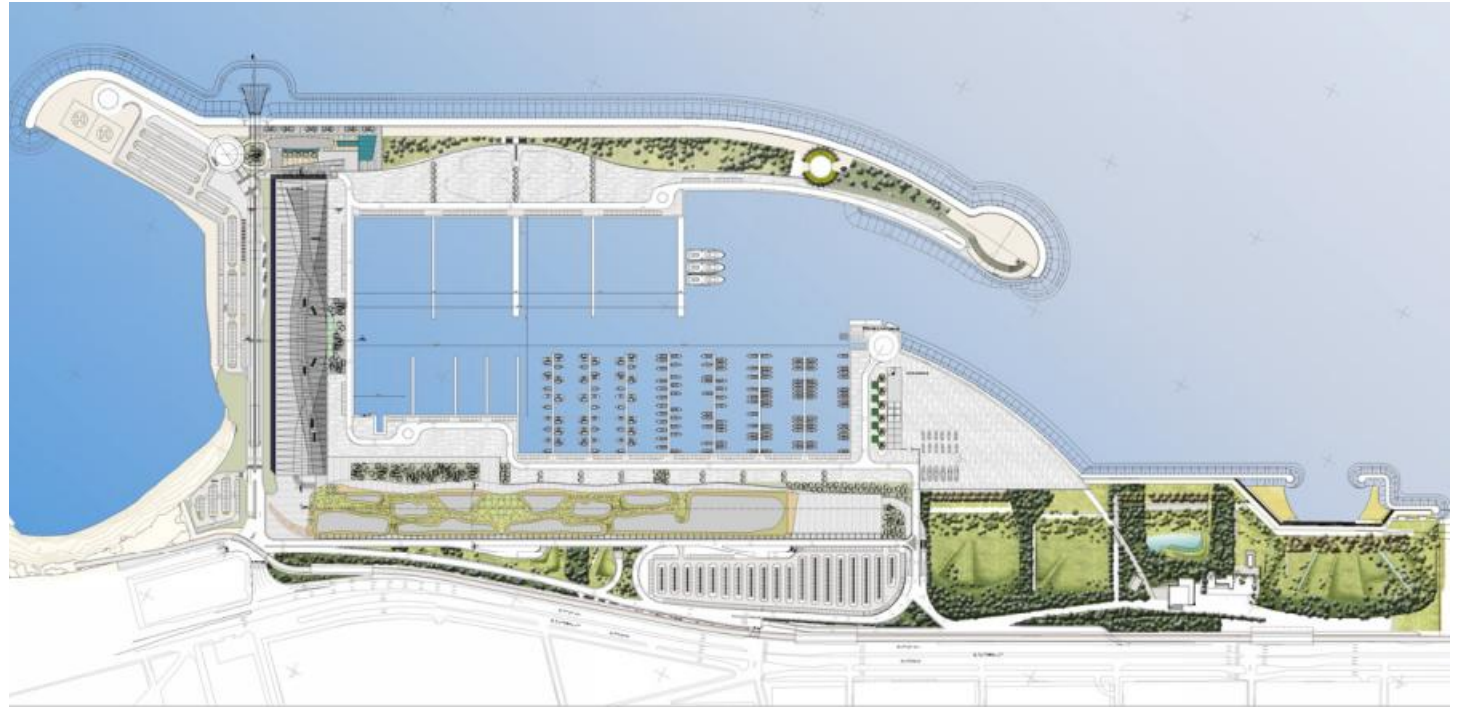
项目综合了奥林匹克竞赛设施和服务于当地居民的综合商业和休闲中心。持续进行的规划和建筑设计包括1000泊位，5万平方米购物休闲中心，5星级精品酒店、游艇俱乐部和国际航海中心，以服务奥林匹克比赛期间的需求。

业主:

雅典奥运会组委会，希腊环境建设规划和公共事务部

合作方:

体育咨询 (MEA和SCKR建筑事务所)，Marnet S.A.，LDK咨询，Sasaki事务所



PUBLIC



Biogen 8 Cambridge Center Cambridge, USA

Masterplanning, urban design and landscape architectural design services were provided for a new production facility located near MIT's campus. The project was the first project to be approved after an extended development moratorium in the City of Cambridge. The project is designed to maintain and expand existing open space corridors and pedestrian pathways in the Cambridge Center redevelopment area. The facility is planned to encourage low-impact commuter transportation such as public transit, bicycles and walking, and the 6 floor, 200,000 square foot building required no parking spaces. The building features seminar, gallery and lounge spaces for the use of Biogen guests and its employees working in other buildings around Cambridge Center, and a landscaped courtyard.

Client:
Biogen IDEC, Cambridge Redevelopment Authority

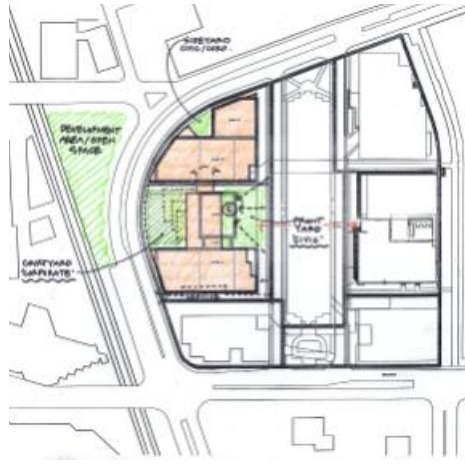
Collaboration:
Payette Associates, Sasaki Associates, Turner Construction Company

Biogen 8 剑桥中心 美国剑桥

这是停寂多年的剑桥市内建设重启的第一个关键项目。项目位于近MIT的地块，作为扩展剑桥开敞空间和步行走廊的一部分。这片建筑设施运用鼓励步行和自行车的策略，没有停车，以减小对当地社区的影响。

业主：
Biogen IDEC, 剑桥重开发委员会

合作方：
Payette事务所, Sasaki事务所, Turner建筑公司



Haixinsha

Guangzhou, China

Site planning, landscape and architectural design services were provided to develop the concept design for Haixinsha, an island in the Pearl River in the City of Guangzhou. Located at the south end of the main north-south axis of the city's new CBD development, Haixinsha will provide a new "Civic Garden" for the city and will include community recreation space, a large civic-scaled festival space, art and cultural amenities as well as access to water transportation and the Pearl River environment. The island will be pedestrian-oriented, with vehicular and public transit facilities located below grade, integrated with lower level retail facilities. The landscape development will include water edge promenades, seating terraces, garden rooms, a botanical garden, an amphitheater, playground areas, skateboard park, sculpture garden and an interpretive Pearl River wetland garden.

Client:

Municipality of Guangzhou

Collaboration:

Guangzhou Urban Design & Research Institute

海心沙市民广场方案详细设计 中国广州

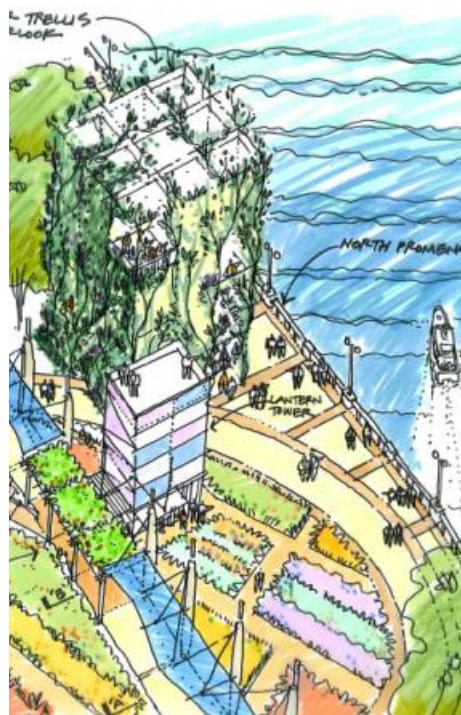
海心沙岛位于广州CBD主轴线南端，目标作为“市民花园”服务于城市。将包括社区休闲设施、大尺度活动场所、艺术文化设施和水上交通接口。设计将汽车等公共交通置于下层，地面步行主导上层。景观设计要素包括水边步道、休息台阶、花房、植物园、露天剧场、游乐场、滑板公园、雕塑公园和珠江湿地公园。

业主:

广州市政府

合作方:

广州城市设计研究院



PUBLIC



Western Marina & Yacht Club Beirut, Lebanon

The Western Corniche and Marina is a vital amenity to the overall Solidere re-development plan for central Beirut. The project is located at the northwest edge of the CBD between the Normandy Landfill and St. Georges Hotel. The plan includes a 4,400 square meter yacht club, a 450 slip marina, a 700 car underground car park and a pedestrian bridge connecting the city to the waterfront activity areas. An international yacht club facility includes food & beverage areas, member conveniences and regatta competition support services. The club's waterfront amenities include tennis and swimming facilities, and outdoor festival and exhibition areas, and other leisure and recreational facilities. Urban design, landscape architectural, architectural and project management services were provided to develop a feasibility master plan and design guidelines for the marina.

Client:
Solidere

贝鲁特西部航海中心 黎巴嫩贝鲁特市

这片西部海滨航海中心为Solidere区域的重要活动设施，服务于贝鲁特市中心区域的居民和观光客。项目位于诺曼底填海区的西北端，紧邻圣乔治酒店。规划范围内包含快艇俱乐部、450泊位的快艇中心，拥有700个地下停车位。一座步行桥连接市中心区和海滨活动区域。国际快艇俱乐部内的设施包括餐饮区、会员活动区和划桨竞赛设施。其活动设施还包含网球、游泳和会展区及其他休闲娱乐场所。

业主：
Solidere



King Abdullah Civic Center Dammam, Saudi Arabia

Master planning, landscape and architectural design services were provided for the King Abdullah Cultural Center to become an iconic and unique waterfront development for Dammam and the Eastern Province of Saudi Arabia. The 256,500 square-meter land reclamation is designed to create a vibrant island landmark integrated with the construction an iconic bridge to span the existing bay and alleviate growing traffic congestion along the Municipality's waterfront. The vision of the project is to use the client's development of publically-oriented facilities to support private sector investment and to create a vibrant waterfront public destination for residents and visitors to the region.

Client:
Kingdom of Saudi Arabia Eastern Province and the Municipality of Dammam

Collaboration:
Zuhair Fayeze Partnership, PA Consultants

阿卜杜拉国王市政中心 沙特阿拉伯达曼市

我们的设计为这片沙特东部达曼地区标志性的沿海开发项目提供全面的规划、景观和建筑设计服务。项目包括25.65万平方米的填海区和一座标志性跨海大桥以解决增长中的交通问题。开发项目的目标是为这片公共观光和展览中心提供投资设施。

业主：
沙特阿拉伯东部省达曼市政府

合作者：
ZFP事务所，PA咨询公司



King Abdullah Civic Center Dammam, Saudi Arabia

The 197,000 square-meter development program includes a civic center and exhibition center, covered stage/theater, marketplace, maritime museum, public library and the King Abdullah Center for Cultural Understanding. Two hotels are planned; one a water-front marina club to address the family-oriented requirements of the Saudi market, and the other an international hotel to meet the expanding needs of business travelers to the region.

Client:
Kingdom of Saudi Arabia Eastern Province and the Municipality of Dammam

Collaboration:
Zuhair Fayeze Partnership, PA Consultants

阿卜杜拉国王市政中心 沙特阿拉伯达曼市

项目建筑面积19.7万平方米，包括一个市民中心、展览中心、剧院、商场、航海博物馆、公共图书馆和阿卜杜拉国王文化中心。项目还包括两个酒店：海滨航海俱乐部以满足沙特的市场需求；另一个国际性酒店以满足来此区域的商务旅客。

业主：
沙特阿拉伯东部省达曼市政府

合作者：
ZFP事务所，PA咨询公司



King Abdullah Civic Center Dammam, Saudi Arabia

A harbor-master facility will provide marine supervisory services and accommodates landside facilities for international fast-ferry passenger service to Bahrain. A 5000-vehicle parking program is accommodated in a series of user-friendly landside parking court areas, and in a garage podium on the island that features light courts and broad pedestrian portals opening out to the harbors and waterfront promenades. The master plan, landscape and architectural design define a functional operational framework that will support a vibrant, dynamic, socially relevant and economically viable expansion of the Dammam waterfront.

Client:
Kingdom of Saudi Arabia Eastern Province and the Municipality of Dammam

Collaboration:
Zuhair Fayeze Partnership, PA Consultants

阿卜杜拉国王市政中心 沙特阿拉伯达曼市

另有航海控制中心以服务调度国际性的快艇前往巴林等地区。作为基地周边停车场的补充，五千辆车位的停车库纵贯整个基地，间隔布置采光井采光通风，并合理利用高差向海滨步廊和船坞开敞。规划、景观和建筑设计作为一个整体，为达曼地区这片具有活力的海滨开发提供具有社会效益、经济合理的功能体系框架。

业主：
沙特阿拉伯东部省达曼市政府

合作者：
ZFP事务所，PA咨询公司



PUBLIC



Luogang Central Area Master-plan

Guangzhou, China

Masterplanning and conceptual architectural design services were provided for a new provincial center for government and municipal services. A variety of government office, administration and court facilities are included in the 50,000 square meter program. The center is also activated by 60,000 square meters of public-oriented cultural, conference, exhibition and support areas.

Client:
Municipality of Guangzhou

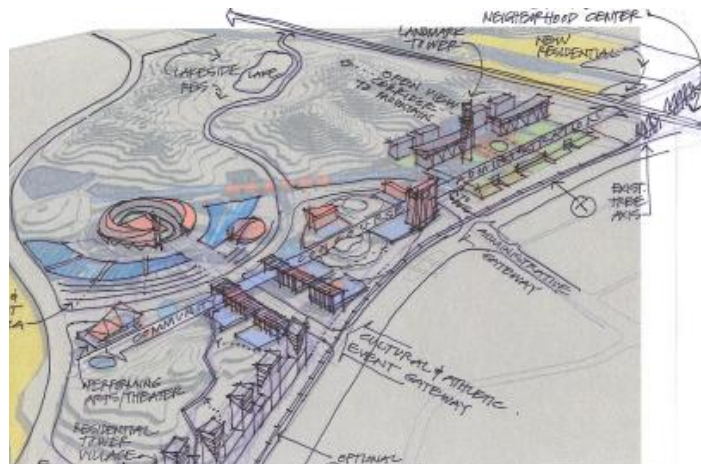
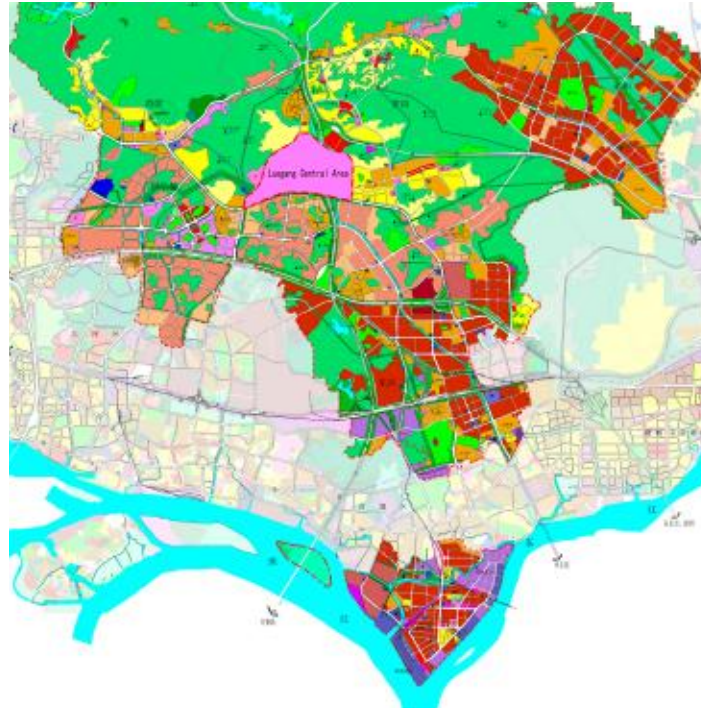
Collaboration:
South China University of Technology (SCUT)

萝岗中心区规划、建筑概念设计
中国广东省广州市

萝岗中心区目标成为省级的多功能行政服务中心。项目包括六万平方米的公共文化、会展广场和五万平方米的政府办公、法院等设施。

业主：
广州市政府

合作者：
华南理工大学



PUBLIC



Luogang Central Area Master-plan

Guangzhou, China

A 70,000 square meter sports complex includes a major stadium facility that features views to the surrounding mountains. Neighboring mid-density residential communities are integrated with the project by over 5 hectares of park area. Boulevards and parkways extend throughout the project site, and in combination with a number of mass-transit stations, encourage pedestrian and low-impact circulation.

Client:
Municipality of Guangzhou

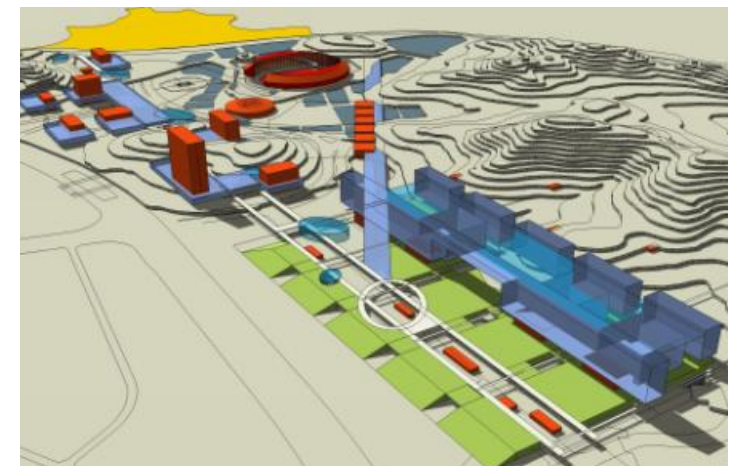
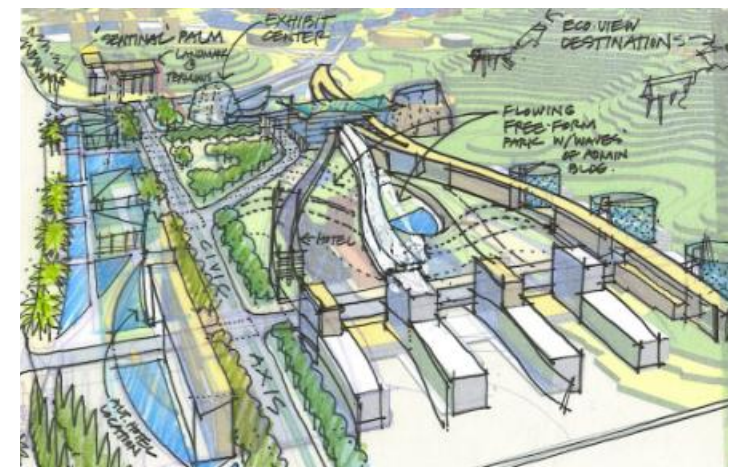
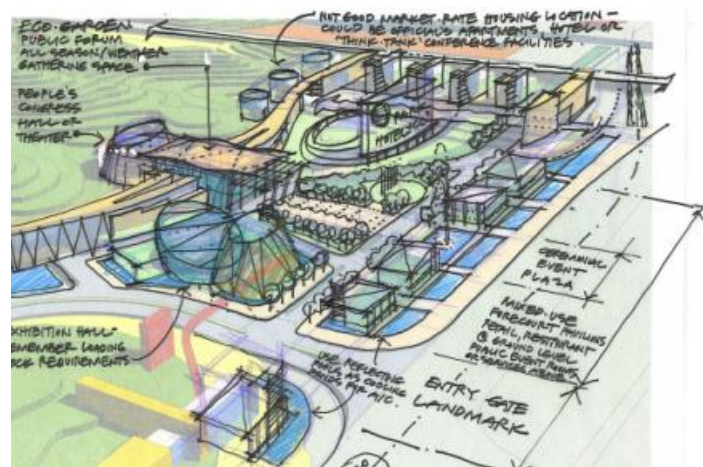
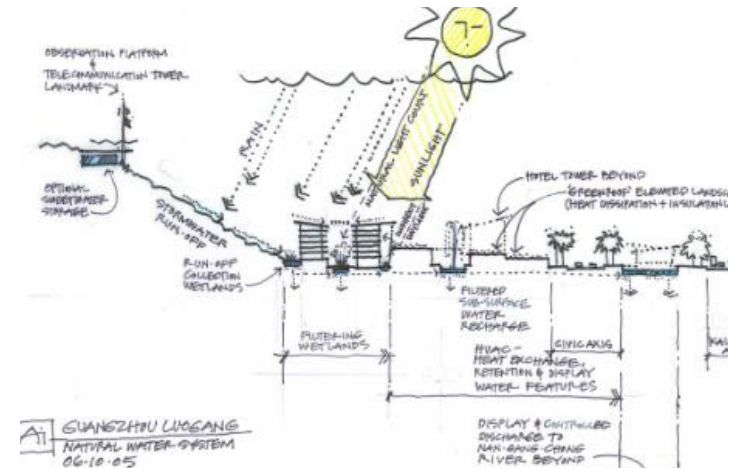
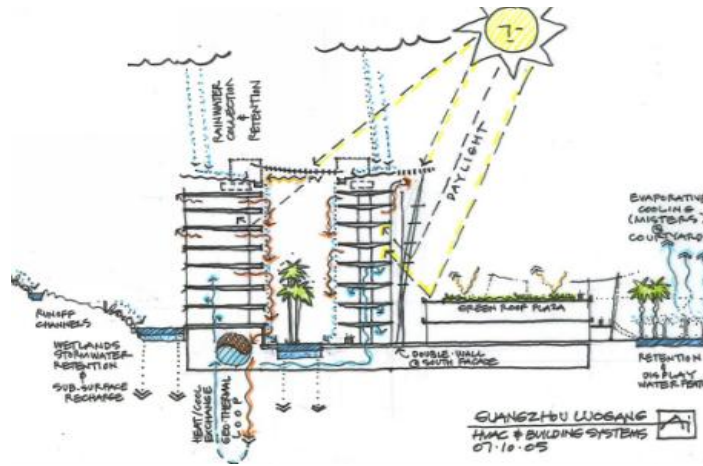
Collaboration:
South China University of Technology (SCUT)

萝岗中心区规划、建筑概念设计
中国广东省广州市

七万平方米的体育综合体包含一个主体育场，其特点是拥有全角度山景。在这些主要设施周边，一系列中等密度的社区和超过五公顷的公园融为一体。众多的公交线路、景观道贯穿中心区，提倡步行并且弱化交通带来的印象。

业主：
广州市政府

合作者：
华南理工大学



Luogang Central Area Master-plan

Guangzhou, China

The project is planned to minimize environmental impacts through the use of erosion mitigation strategies, rainwater run-off recapture systems, and building design strategies to maximize shading, natural ventilation and passive day lighting of interior spaces.

Client:
Municipality of Guangzhou

Collaboration:
South China University of Technology (SCUT)

萝岗中心区规划、建筑概念设计
中国广东省广州市

规划设计和建筑概念设计引入雨水回收系统、减少自然侵蚀、自然遮阳通风和主动性自然室内照明灯设计原则。

业主：
广州市政府

合作者：
华南理工大学



Magna New City Master Plan Kingdom of Saudi Arabia

Urban design, program vision and development, and architectural design services were provided for a new and sustainable gateway city located on 220 square-kilometers of Saudi Arabia's Red Sea coastline. The 39-million square-meter development program includes educational, commercial, residential and government uses. The peninsula site features dramatic views to surrounding mountains and pristine bayside areas of the Red Sea. A series of canals extend inland from the Red Sea and define urban sectors radiating out from a core of commerce, education and health-related uses. Complementing the core area uses are urban sectors that include trade & finance, transportation and energy facilities, tourism, recreation and residential uses programmed at canal and seaside locations.

Client:
The Marawid Group

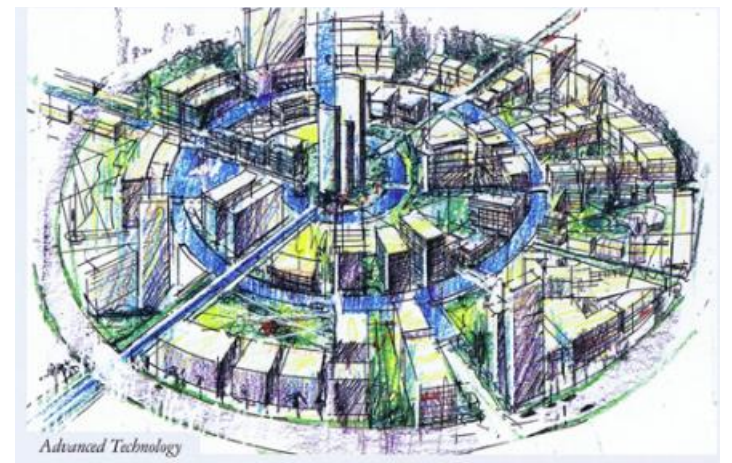
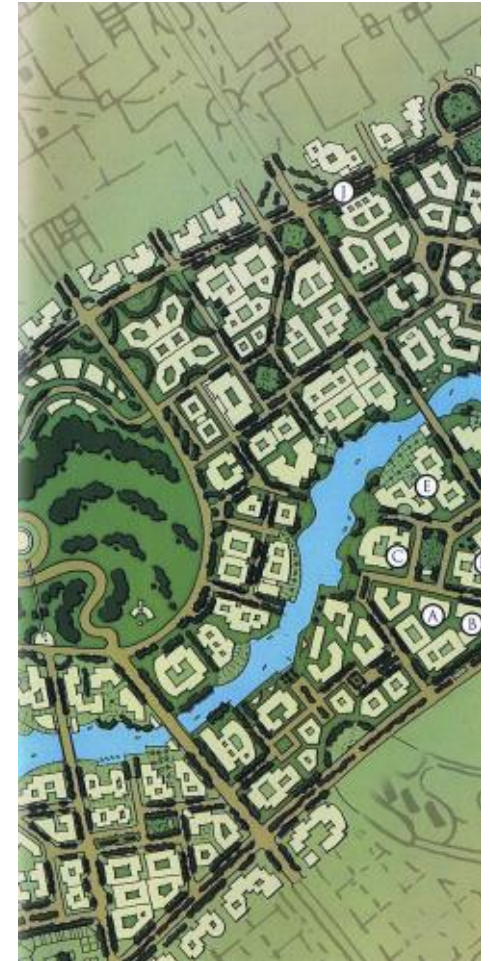
Collaboration:

麦格纳新城总体规划
沙特阿拉伯

这片沙特红海湾前端的新城开发项目中包含220平方公里的城市设计、功能配置和建筑设计。其中39万平方米的建设开发包含教育、商业、住宅和政府办公功能。在这座半岛，周边红海海岸景观优美。一系列贯穿的运河向陆地延伸，并且划分出商业新政核心区、商业区、以及海岸边的住宅区块。

业主：
The Marawid 集团

合作方：
PA咨询, Hart Howerton



PUBLIC



- Planning
- Urban Design
- Architecture
- Landscape Architecture

