



Ai + Architecture LLC
RESIDENTIAL

Ai + Architecture LLC., 90 Belknap Street, Concord, MA 01742, USA www.ai-architecture.com +1 978 369 2730 (t) +1 978 369 2731 (f)
Ai建筑事务所，美国马萨诸塞州康科德市贝尔耐普街90号 邮编01742



we are
an **international practice**
strengthened by **local collaboration**

我们的成功来自与您的合作



China
Japan
Korea
Greece
Spain
Germany
Egypt
United Kingdom
United States

+PLANNING 规划

+URBAN DESIGN 城市

+LANDSCAPE 景观

Ai+ARCHITECTURE 建筑



Ai+Architecture LLC offers a personal approach to complex planning and design challenges. Backed by years of collective domestic and international experience across a wide range of mixed-use projects for private, public and institutional clients, we collaborate in multi-disciplinary teams to provide planning, urban design, architecture and landscape architectural services.





we are **inventive** 创新
inspired 灵感
collaborative 合作

Ai+Architecture is experienced in working at the master planning and conceptual design phases of projects to create pedestrian-oriented urban design, define innovative development programming, and realize award-winning master planning, landscape and architectural design.

Ai 专注于人性化的总体规划和概念设计
创新的城市开发功能配置 宜人的都市设计
规划设计 景观设计 建筑设计
屡获殊荣



获奖情况

- 美国建筑师协会(AIA)波士顿协会荣誉奖
- 韩国斗山百年纪念公园, 韩国, 1999
《波士顿杂志》, 梦想厨房现代系列
- 伊斯顿/安德森住宅, 2006
北京房山中心购物区规划设计竞赛 - 第一名, 2011
广东佛山珠江河滨规划设计竞赛 - 最终阶段, 2007
国际公园协会杰出奖
- 美国南卡州查尔斯顿旅游接待及交通中心, 1996
萝岗中心区总体规划竞赛 - 第二名, 2006
美国建筑师协会(AIA)新英格兰委员会荣誉奖
- 神秘海港博物馆, 1988

展览和发表

- 威尼斯双年展(水上城市)
- 雅典奥运会帆船航海中心, 2004
Tsarin 125, 佐佐木事务所: 釜山海滨规划, 2002
《世界建筑》“波士顿建筑协会”
- 十一月期, 1998
《波士顿住宅和花园杂志》- 林肯住宅, 2006
《顶级厨房卫浴》封面故事 - 林肯住宅, 2007
《滑雪区域管理》- 中国市场, 2011

客户

- Al-Kharafi & Sons 公司 (MAK 集团)
Alturki 集团
雅典2004奥运会组委会
北京首都置地
北京万科
长春万科
IDEA 协会
Kume Sekkei 有限公司
广西利海
广州城市规划设计研究院
沙特阿拉伯市政署
融科智地
富力地产
华南理工大学建筑规划设计院
住友商事
三星建设
清华大学规划设计院

Selected List of Awards

- Boston Society, American Institute of Architects Honor Award 1999
- Doosan 100 Year Commemorative Park; Seoul, Korea, 1999
Boston Magazine, Dream Kitchens Contemporary Category, Finalist
- Easton/Anderson Residence, 2006
Fangshan Central Shopping District Master Plan Competition
- First Prize, 2011
Foshan Pearl River Canal Riverside Master Plan Competition
- Finalist, 2007
International Parking Institute, Award of Excellence 1996
- Visitor Reception and Transportation Center; Charleston, South Carolina
Luogang Central Area Master Plan Competition
- Second Prize, 2006
New England Council, American Institute of Architects, Merit Award 1988
- Mystic Seaport Museum

Selected List of Publications & Exhibitions

- Venice Biennale International, Architecture Exhibition (Citta' D'Aqua/
Cities on Water) 2004: Athens Olympic Sailing Center and Marina
Tsarin 125, Oct 2002: Sasaki Associates -Pusan Waterfront Plan
Boston Society of Architects/World Architecture Symposium, Nov 1998:
World Architecture -Trading on the American Way
Boston Magazine's Home & Garden. Summer 2006: Lincoln Residence,
Signature Kitchens & Baths, Cover Project, Summer 2007:
Lincoln Residence
Ski Area Management, China January 2011: The State of the Industry

Representative List of Clients

- Al-Kharafi & Sons Company (MAK Group)
Alturki Group
Athens 2004 Olympic Committee
Beijing Capital Land Group
Beijing Vanke Co., Ltd.
Changchun Vanke Co., Ltd.
IDEA Inc.
Kume Sekkei Co., Ltd
Guangxi L'Sea Property Development Company
Guangzhou Urban Planning Design & Survey Institute
Ministry of Municipal and Rural Affairs, Saudi Arabia
Raycom Real Estate Development Company
R & F Properties Development Company
SCUT
Sumitomo Construction Company
Samsung Construction Company
Tshinghua University Urban Planning & Design Institute



Majuqiao Residences

Beijing, China

Master planning, landscape architecture and architectural design services were provided for a new residential community on a 65,000 square-meter site in southeastern Beijing. The 2.5 FAR development program is distributed among mid-rise residential condominium blocks complemented by high-rise towers that visually define landscape spaces while maximizing views and daylight access to the individual units.

Client:
Beijing Raycom Real Estate Development Co., Ltd.

Collaboration:
Beijing Newer Architectural Design, Ltd.
Beijing Sunshine Landscape Co., Ltd.

融科 均廷
中国北京市

这个6.5万m²的项目位于北京马驹桥区域，Ai提供总体规划、景观和建筑设计。项目容积率2.5，产品包括九层的多层、小高层、高层，此外包含中心会所和少量连排。

业主：
北京融科

合作方：
北京新纪元建筑工程公司，北京阳光景观设计



RESIDENTIAL



Majuqiao Residences

Beijing, China

A classically influenced 3,000 square-meter Clubhouse and Marketing Center creates a symbolic and functional community landmark within a central garden with ponds which is highlighted by a cascading water feature. The Majuqiao project includes a kindergarten and 5,600 square-meter public park and playground.

Client:
Beijing Raycom Real Estate Development Co., Ltd.

Collaboration:
Beijing Newer Architectural Design, Ltd.
Beijing Sunshine Landscape Co., Ltd.



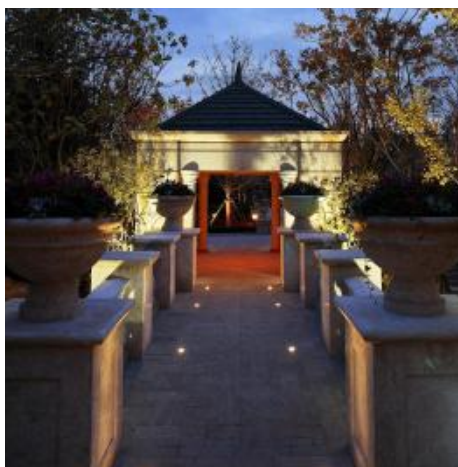
融科 均廷

中国北京市

具有古典风格的三千平方米的会所（前期作为销售中心），作为视觉上和功能上的中心，坐落在小区的中心花园，被风格化的水池和跌水环抱。此外本项目还包含幼儿园及五千多平方米的公共花园。

业主：
北京融科

合作方：
北京新纪元建筑工程公司，北京阳光景观设计



RESIDENTIAL



Stratford Residences Huacao, China

Two urban parcels were combined to create a singular residential development of gardens, courtyards and human-scaled open spaces. European architectural design influences and details were used to create a new and distinctive premium residential brand. The 12.3 hectare project site includes a public park and a mixed-use community center that accommodates recreational and retail uses within a renovated factory structure.

Client:
Shanghai VANKE, Ltd.

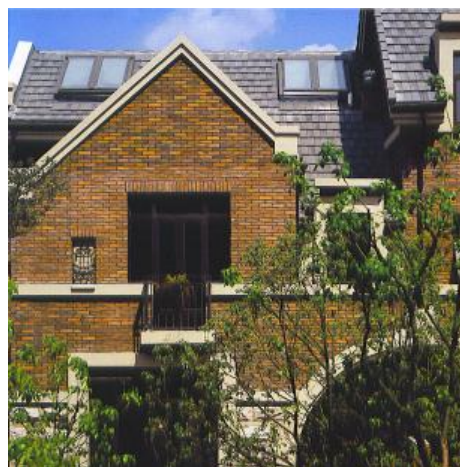
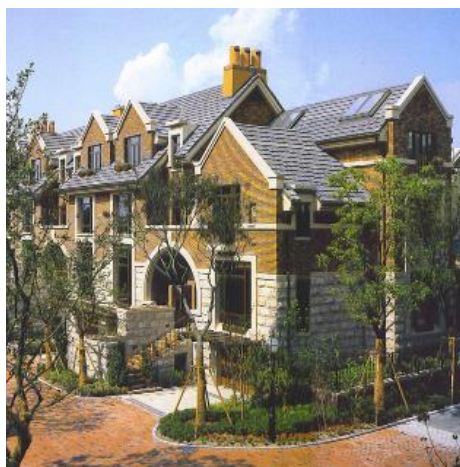
Collaboration:
Borderland Design

万科 红郡（斯坦福系列） 中国上海华漕

这片高端住宅项目位于上海华漕区域，两片相岭的地块由花园、院落和人体尺度的开放空间组成。建筑风格和细部处理上吸取Tudor等传统建筑学精华，形成高贵的社区品质，并突出强调独户的入口体验。项目占地12.3公顷，包括一个公共的园林和一个综合功能的社区中心。此社区中心建筑由工业厂房改造而成，引入新的休闲和商业功能。

业主：
上海万科

合作方：
源界建筑



Wukesong Residential District Beijing, China

Master planning and conceptual design services for a new 16.2 hectare residential community located adjacent to the 2008 Beijing Olympic baseball venue. Designed with respect for stringent solar access regulations and development program requirements, the project creates neighborhood groupings of residential buildings arranged around landscape and clubhouse recreational amenities. Mixed-use retail, recreational and commercial uses are integrated at perimeter and gateway locations. Underground parking garages feature courtyards and sunken gardens for daylight and views. Extensively glazed vertical circulation cores are utilized for orientation and the convenience of residents. A public school facility is included in the master plan.

Client:
Shimao Group

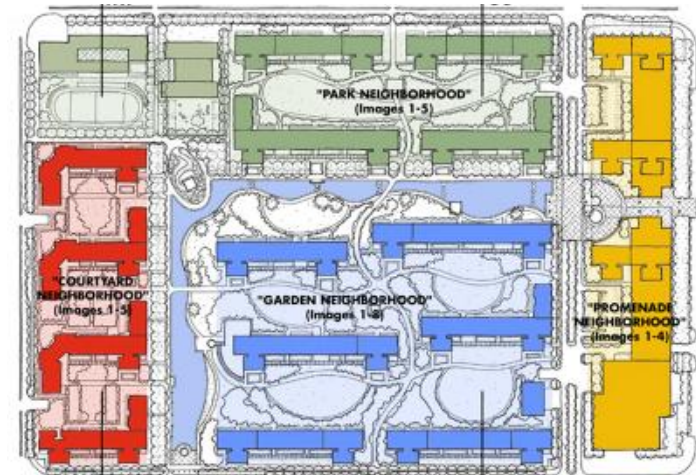
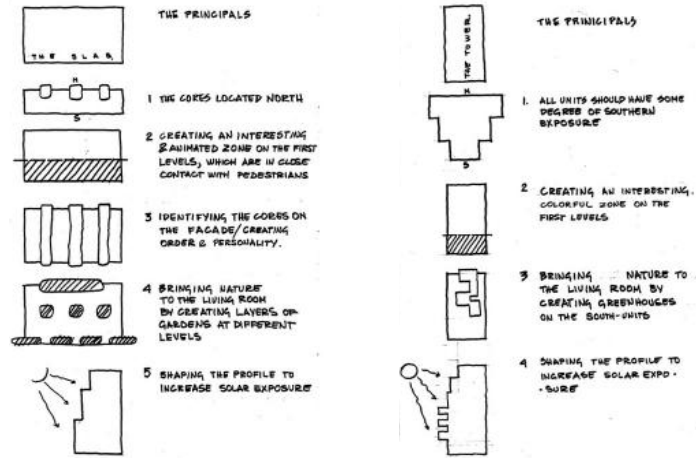
Collaboration:
Sasaki Associates

五棵松住宅区 中国北京市

这片住宅区面积16.2公顷，紧邻北京奥运会垒球场馆区。总体规划和概念性建筑设计满足了严格的日照计算和功能要求。以景观和休闲会所为中心布置社区组团，在主要入口区域设置综合功能商业休闲设施。庭院、花园和自然采光改善了地下车库的使用体验；景观和垂直玻璃幕墙交通核为用户提供了视觉引导。

业主：
世茂集团

合作方：
Sasaki 事务所



MIXED USE
RESIDENTIAL



Wukesong Residential District Beijing, China

Residential buildings are arranged to define garden courtyard environments and to relate to each other as neighborhood groups, rather than as isolated individual structures. 9 to 15 level residential buildings are designed to maximize views and access to daylight for each unit. Multiple cores are utilized to minimize corridors and create semi-private lobby spaces. A clubhouse cafe along a cascading water feature combines with sunken courtyards and vertical light-wells to function as site amenities and pathways connecting buildings, gardens and the underground parking garage.

Client:
Shimao Group

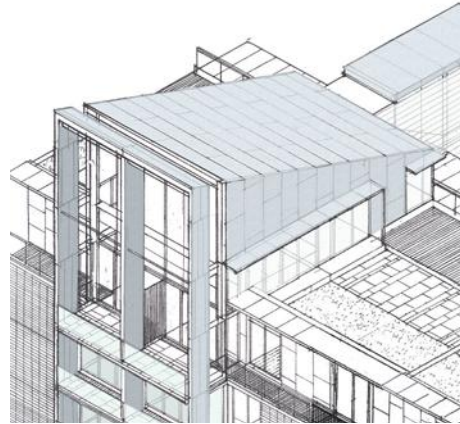
Collaboration:
Sasaki Associates

五棵松住宅区 中国北京市

相对于孤立的住宅楼，庭院和建筑间的呼应等建筑语言创造了社区组团。错落布置九层和十五层的住宅，以期获得最大化的日照和景观视野。多核心筒设置优化了交通空间和半私密的大堂空间。小区会所、咖啡、下沉庭院、垂直交通采光井等建筑元素串联了建筑、花园和地下车库，并成为视觉的引导和景观节点。

业主：
世茂集团

合作方：
Sasaki 事务所



Yanming Lakeside Community Masterplan

Zhenzhou, China

Masterplanning services were provided for an 80-hectare waterfront residential development adjacent to China's Yellow River. The development program includes lakeside single family villas, canal-side townhouses, and limited mid-rise condominium apartment buildings.

Client:
Guangxi L'Sea Property Development Co., Ltd.

Collaboration:
South China University of Technology (SCUT), EDSA

雁鸣湖社区总体规划
中国郑州

这片湖滨社区占地80公顷、包含住宅、河滨连排和多层住宅。

业主：
广西利海

合作方：
华南理工大学



RESIDENTIAL



Yanming Lakeside Community Masterplan

Zhenzhou, China

A village center with mixed-use retail and commercial space, a residents' social and athletic club, and a kindergarten is located on an island at the gateway to the development. Site planning and landscape design utilizes agricultural and flood-control canals in combination with filtering wetlands to capture rainwater run-off, recharge ground water systems and create a scenic landscape environment.

Client:
Guangxi L'Sea Property Development Co., Ltd.

Collaboration:
South China University of Technology (SCUT), EDSA

雁鸣湖社区总体规划
中国郑州

社区中心由商业零售、社区会所和幼儿园组成。利用基地内贯穿的运河和湿地，综合雨水回收策略与整体的规划和景观设计之中。

业主：
广西利海

合作方：
华南理工大学



Yuan Yang Lake Dreamtown Residential Village

YuanYang, Chongqing, China

Masterplan, schematic and detailed landscape architectural design for a new mid to high-rise residential development sited on mountain slopes and along the shores of a scenic lake and canal area. The 64-hectare site will support approximately 5000 residential units of varying types ranging from single-family villas and townhouses, to high-rise condominium flats featuring dramatic views of the lake and surrounding countryside. The development is divided into a number of distinct neighborhoods defined by the specific site conditions of their locales. Pedestrian-oriented open space and view corridors link the individual neighborhoods to a central lake amenity surrounded by waterfront parks, trails and recreational amenities. The detailed schematic design for the 1900-unit first phase of the development features residential buildings framing 4 intimately-scaled garden courtyards.

Client:

Chongqing Raycom Real Estate Development Co.,Ltd.

Collaboration:

CELEC/Chongqing Evergreen Landscaping Engineering Corporation

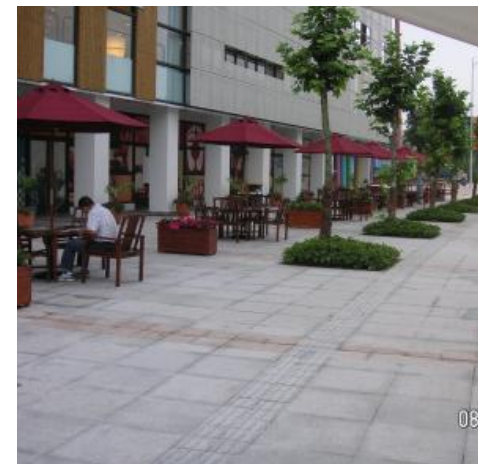


融科海阔天空社区 中国重庆

项目占地64公顷，共5000余户从别墅到高层等不同户型。项目依据不同的坡地等自然条件划分成若干组团。我们的设计内容包括总体规划方案和详细景观设计方案。

业主：
重庆融科

合作方：
CELEC



MIXED-USE
RESIDENTIAL



- Planning
- Urban Design
- Architecture
- Landscape Architecture

